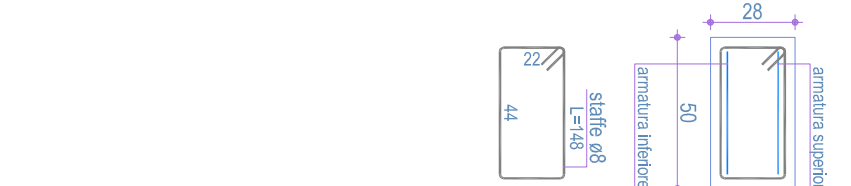
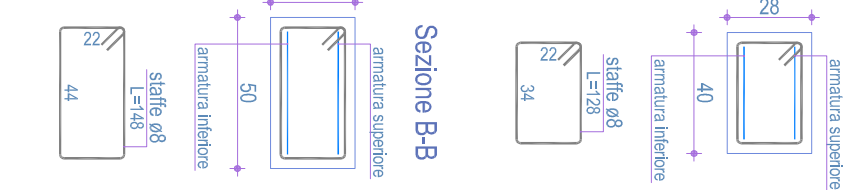


PROGETTO ESECUTIVO DELLE STRUTTURE IN C.A.

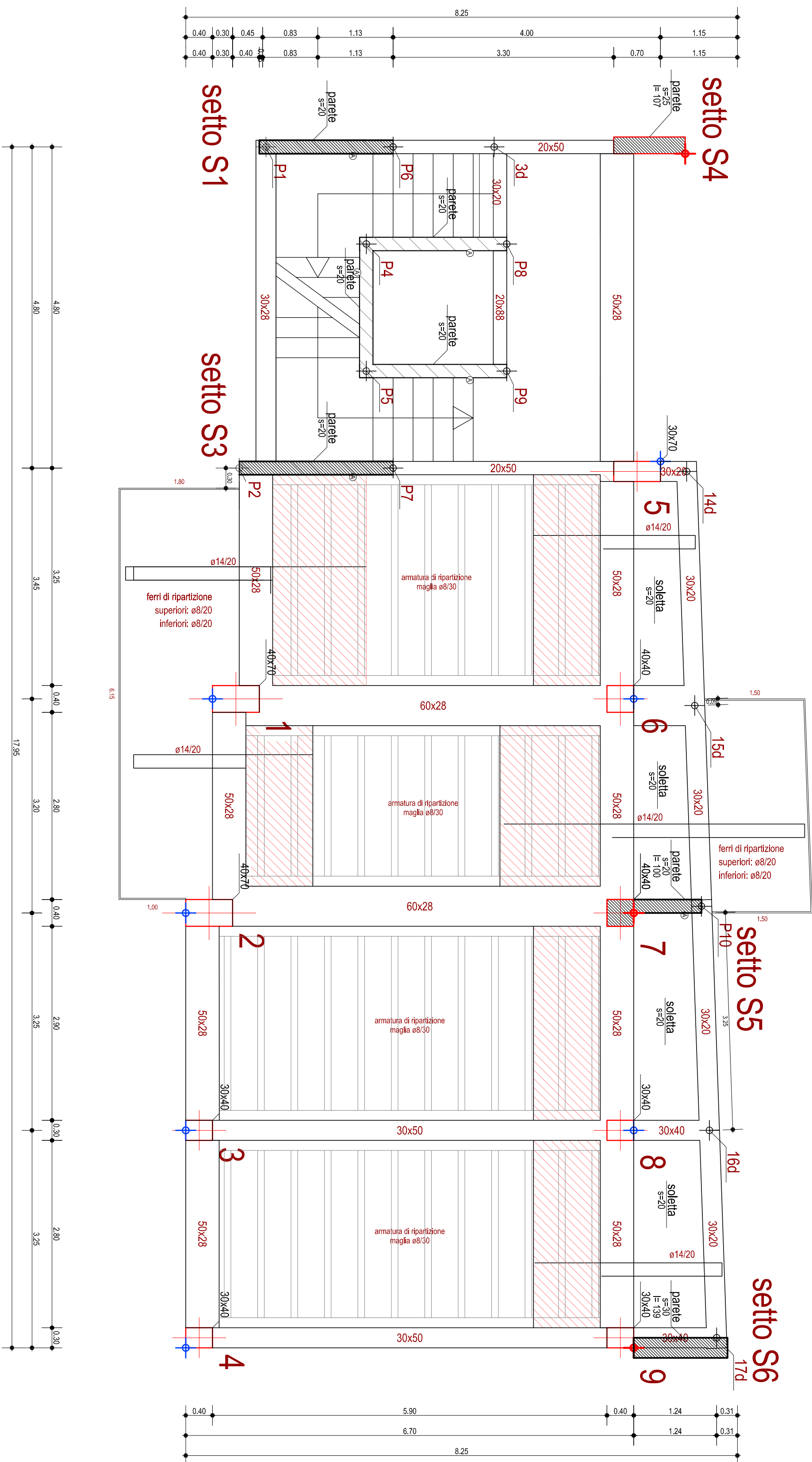
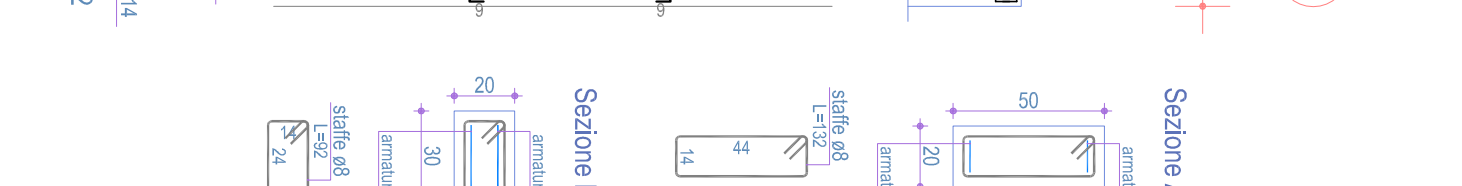
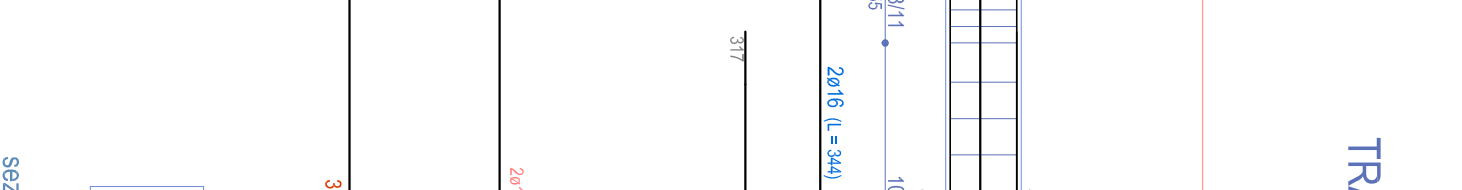
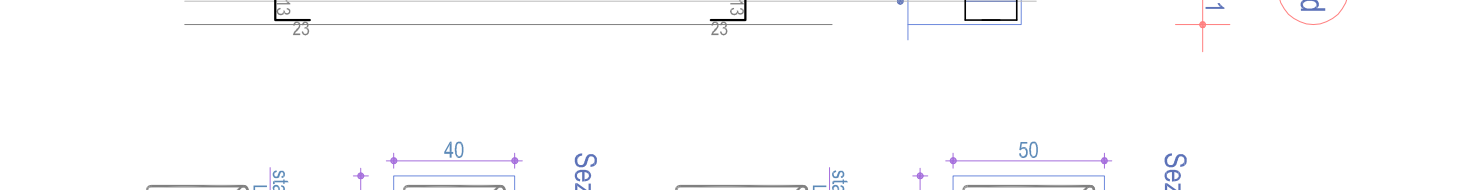
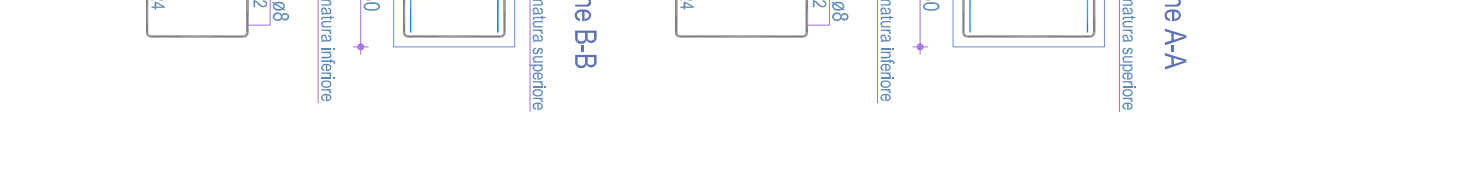
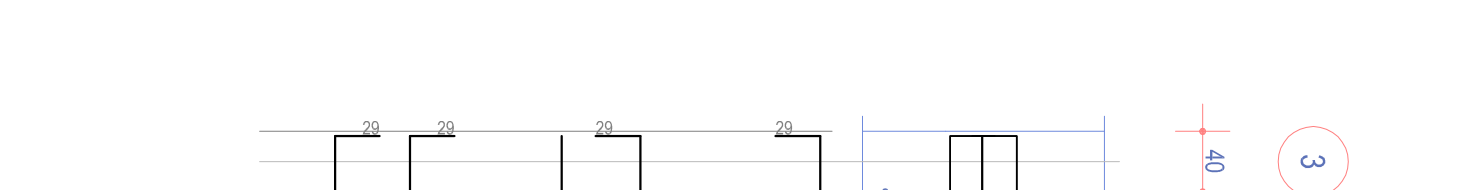
Progettista, Ing. Michelangelo Raddi
ufficio tecnico Casa Livorno e Provincia S.P.A.

Doc. Ing. Michelangelo RAUDDI	
ORDINE INGEGNERI PROV. LIVORNO	
SEZ. A	Ing. <i>M. Rauddi</i>
N. 1189	

DIREZIONE X



IRAVE P/-5-1-
phone pññ



cis per magrone e sottofondazione: Rck>= 150 kg/cmq
cis per strutture di fondazione tipo C25/30: Rck= 300 kg/cmq
cis per strutture di elevazione tipo C25/30: Rck= 300 kg/cmq
acciaio in barre ad aderenza migliorata B 450C

LETTE IN CA:

pignatte ribassate di cm. 4
(cm. 20 anzichè c. 24)
per ancoraggio ferro superiore in soletta c.a.

SOLAIO A PANNELLI in latero cemento
spessore complessivo cm 24+4

ala

bitazione
